

Outdoor Dual SIM LTE Cellular Router Quick Installation Guide

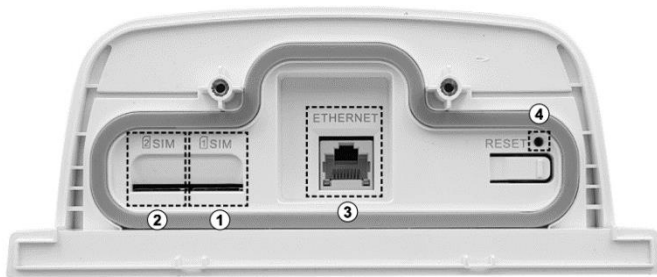
Version: 1.20

Physical Appearance

Dimension (W x H x D): 170 x 225 x 89 mm



Hardware Interfaces



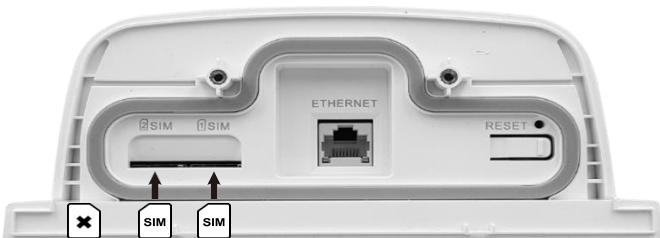
#	Item	Description
1	1 SIM	Micro SIM Card slot 1. It's the default.
2	2 SIM	Micro SIM Card slot 2
3	ETHERNET	10/100/1000Mbps Ethernet Port with PoE
4	RESET	Reboot: Press less than 5 seconds Restore to factory default: Press for at least 5 seconds

Hardware Installation Procedures

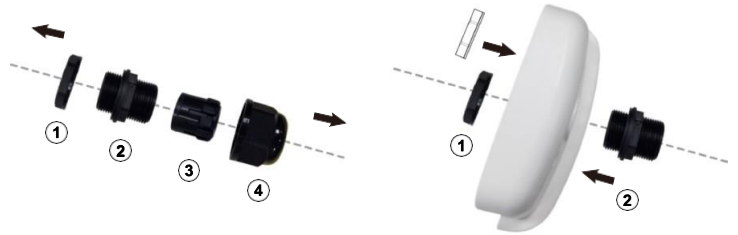
STEP 1: Unscrew 2 screws and remove the bottom cover.



STEP 2: Insert a Micro SIM into SIM holder slot 1 and the second SIM into Slot 2. Beware of the micro SIM orientation.

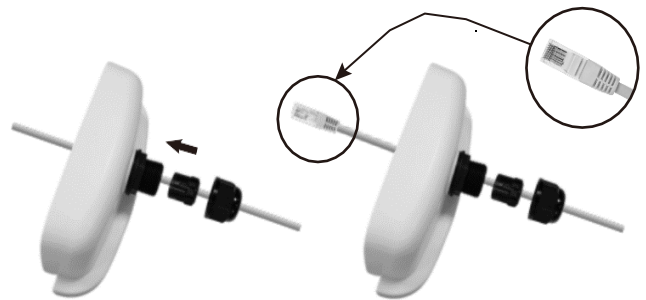


STEP 3: Split the rubber plug components. Fix 1 and 2 with the bottom cover.

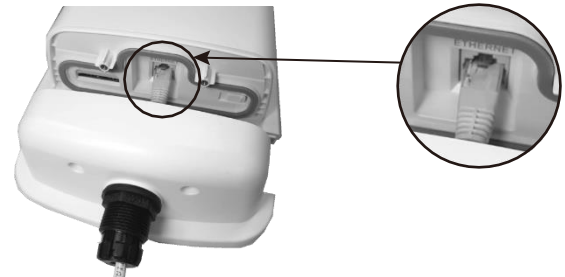


STEP 4: Put the Ethernet cable through the hole of the bottom cover and make a new RJ45 connector.

NOTE: Ethernet cable is not included in the package.



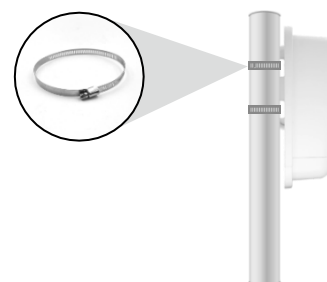
STEP 5: Insert the RJ45 connector into the Ethernet port.



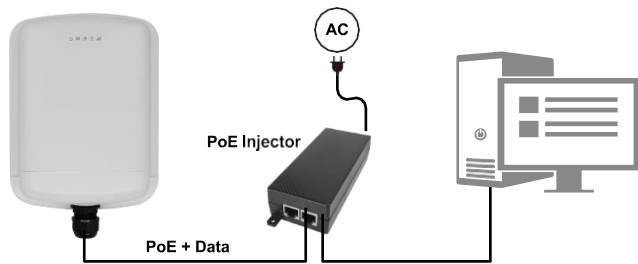
STEP 6: Put the bottom cover back and screw them tightly. Lock the rubber plug.



STEP 7: Put the device on a pole in the right height and direction. Fix the router with the pole mounting kit.



STEP 8: Connect the Ethernet cable into the PoE Injector.



STEP 9: Power on the PoE Injector.

STEP 10: Connect a PC to the PoE Injector for configuration.

LED Indicators

LED	ON	OFF	Blinking
System: GREEN	System Ready	X	System in Booting
LAN: GREEN	X	X	Ethernet Data Transmitting
Internet: GREEN	Internet is connected	Internet is not connected	X
SIM: GREEN	SIM is detected	No SIM	Slow: SIM Detecting Fast: SIM Error
Signal: RED, ORANGE, GREEN	Signal Strength: Low(RED) / Medium (ORANGE) / Good (GREEN) OFF: LTE is not connected.		

Ethernet Connector

The Ethernet connector follows EIA-568B wiring pattern.

Pinouts for 10/100Mbps and 1000Mbps data.

Pin	Color	10/100Mbps Data	1000Mbps Data
1	White/Orange	Tx +	Tx Rx A +
2	Orange	Tx -	Tx Rx A -
3	White/Green	Rx +	Tx Rx B +
4	Blue	X	Tx Rx B -
5	White/Blue	X	Tx Rx C +
6	Green	Rx -	Tx Rx C -
7	White/Brown	X	Tx Rx D +
8	Brown	X	Tx Rx D -

Pinouts for 10/100Mbps and 1000Mbps PoE.

Pin	Color	10/100Mbps Power	1000Mbps Power
1	White/Orange	V +	V +
2	Orange	V +	V +
3	White/Green	V -	V -
4	Blue	X	X
5	White/Blue	X	X
6	Green	V -	V -
7	White/Brown	X	X
8	Brown	X	X

Web Access

After default reset, the IP address of the device is **192.168.1.1**

Username: **root**

Password: **2wsx#EDC**

NOTE

- Please scan below QR Code to download online resources.
Download Link: <https://www.proscend.com/en/product/M366.html>



M366