

# M331-IG Industrial IoT Gateway

## Quick Installation Guide

Version: 1.00

### Install the SIM Card

- STEP 1:** Before inserting or removing the SIM card, ensure that the power has been turned off, or the power connector has been removed from the M331-IG IoT Gateway.
- STEP 2:** Using a screwdriver to remove the metal protective cover first, insert the SIM card into the card slots. The cut-off edge of the SIM card on upper SIM slot 1 (lower SIM slot 2) is to the left (right).
- STEP 3:** Push the SIM card and lightly press it to lock into the slot.
- STEP 4:** Remove the SIM card, lightly press it and it will pop out of the slot.



#### NOTE:

- Please use the industrial SIM card operating from -40°C to +105°C to ensure proper IoT Gateway operation.
- SIM loose contacts: adding a layer of tape behind the SIM might increase contact pressure for better attachment.

### LED Indicators

The following table explains the LED indicators on the front panel.

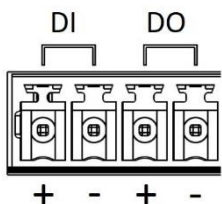
LED	Off	On	Slow	Fast	Heartbeat
SYS	Power down	Power up	N/A	N/A	N/A
SIM	Not working	Connected	Connecting	Error	Reading
Signal	No signal	High signal	Medium signal	Low signal	N/A

### Reset Button

Function	Operation
Reset	Press the button for 1 seconds.
Reset to default setting	Press the button for more than 5 seconds.

### Connecting I/O Ports

There are four terminals on the terminal block with two terminals used for digital input and two terminals used for digital output.

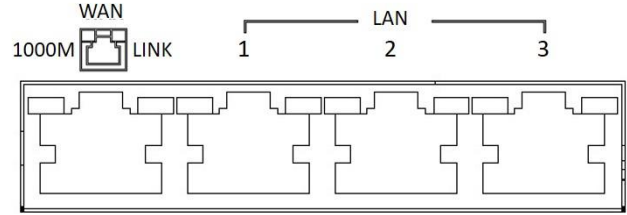


Pin	Description
DI +	Digital Input
DI -	
DO +	Digital Output
DO -	

DI: Low (+0 to +3V) / High (+8 to +40V)  
DO: Open Collect (maximum 30V/300mA)

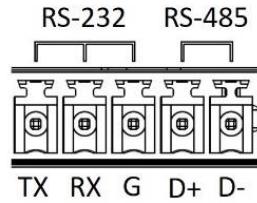
### LED Indicators of Ethernet Port

There are two LED indicators for each of three LAN ports and one WAN port.



LED	Blinking	On	Off
1000M	N/A	1000Mbps	10/100Mbps
LINK	Data Transmitting	LINK UP	LINK DOWN

### RS-232 and RS-485 pinouts



#### NOTE:

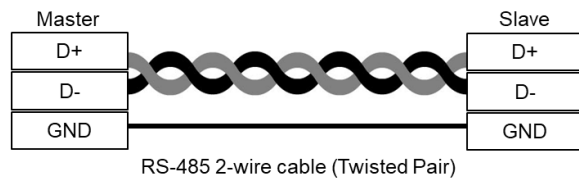
- RS-232 and RS-485 share the common ground pin "G".

#### RS-232

Pin	Signal	Direction
TX	Transmit Data	Output
RX	Receive Data	Input
G	Signal Ground	-

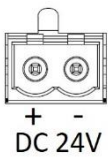
#### RS-485

Pin	Description
D +	Serial Port, Data+ (A) wire
D -	Serial Port, Data- (B) wire
G	Signal Ground



## Connecting the Power Supply

Powering the M331-IG IoT Gateway is by either a terminal block or a DC jack.



One terminal block is on the front panel.

The power input voltage range is 8 ~ 26 VDC.



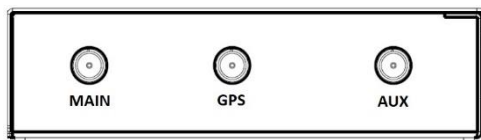
One DC Jack is on the front panel.

The power input voltage is 12 VDC.

## Antenna Installation

Three SMA connectors placed on the left panel are for connecting to external LTE and GPS antennas.

- MAIN: for LTE Transmit and Receive
- AUX: for optional LTE Receive for better downstream speed
- GPS: for GPS

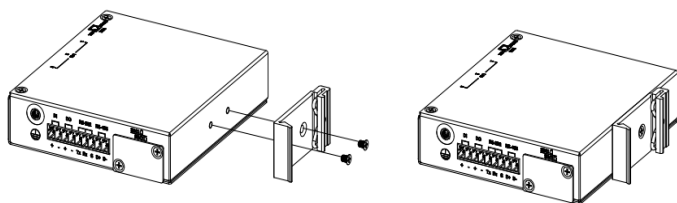


## DIN-rail Mounting

**STEP 1:** Use the screws to install the DIN-rail kit to attach at the rear side of the device.

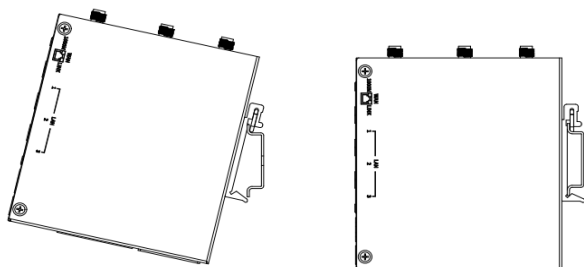
**NOTE:**

- Three screw types are flat head M3 x 5 mm.



**STEP 2:** Hook the unit onto the DIN-rail.

**STEP 3:** Push the bottom of the unit towards the DIN-rail until it locks in place.



## Wall Mounting

**STEP 1:** At the bottom side of the device, use two screws to install each bracket.

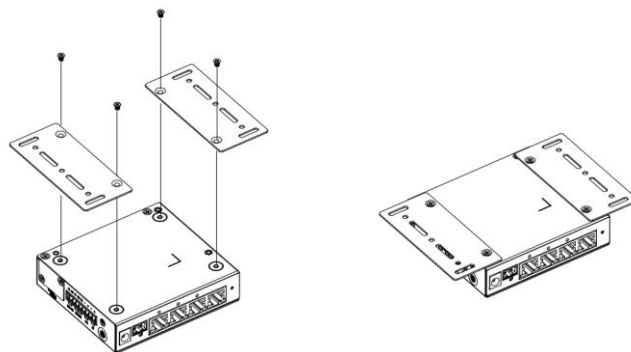
**NOTE:**

- Each screw type is flat head M3 x 4 mm.

**STEP 2:** Use the screws to attach the bracket of the device for wall mounting.

**NOTE:**

- These screws are not included in the package. The head of each screw is less than 7 mm in diameter, the shaft is less than 3 mm in diameter, and the length is less than 10 mm in diameter.



## Setup

### (1) Access the Web Configurator

- Type the default URL **http://192.168.1.1** in your web browser.
- In the login page, enter the default username **root** and the default password **2wsx#EDC** and then click the **Login** button.

### (2) Change Password

Go to the **Management -> Administration** and enter the desired **New Password** and then scroll down the page and click the **Apply** button.

#### NOTE

- Please scan below QR Code to download online resources.

Download link: <https://www.proscend.com/en/product/M331-IG.html>



M331-IG