

The PROSCEND logo is located in the top left corner. It features the word "PROSCEND" in a bold, blue, italicized sans-serif font, with a registered trademark symbol (®) to its upper right. The background of the entire page is a collage of digital and network-related imagery, including a world map, binary code (0s and 1s) on the right, a globe in the center, and a blue circuit board pattern at the bottom right.

# 5600 Series

## 2BASE-TL EFM Network Extender

### Descriptions

PROSCEND 5600 series is the EFM Based Network Extender which provides a flexible and friendly solution for the Ethernet based services provision to subscribers by the service provider. Additionally, this family of products provides a simple way in a back-to-back deployment to provide point to point configuration. This allows broadband service providers to deploy single DSL lines economically when required for low density geographical areas or during start up phase

PROSCEND 5600 series provides cost-effectively symmetrical bandwidth at rates up to 22.8 Mbps which allows service providers to deliver friendly Ethernet services rapidly. PROSCEND 5600 series extends the reach of Ethernet services to the sites with no fiber access to by using bonded copper pairs. Designed with standard-based EFM technology (2BASE-TL), the delivery of Ethernet services with PROSCEND 5600 can be deployed quickly on the existing copper plant. It is a nice application for back-to-back connection between remote office and enterprise headquarters

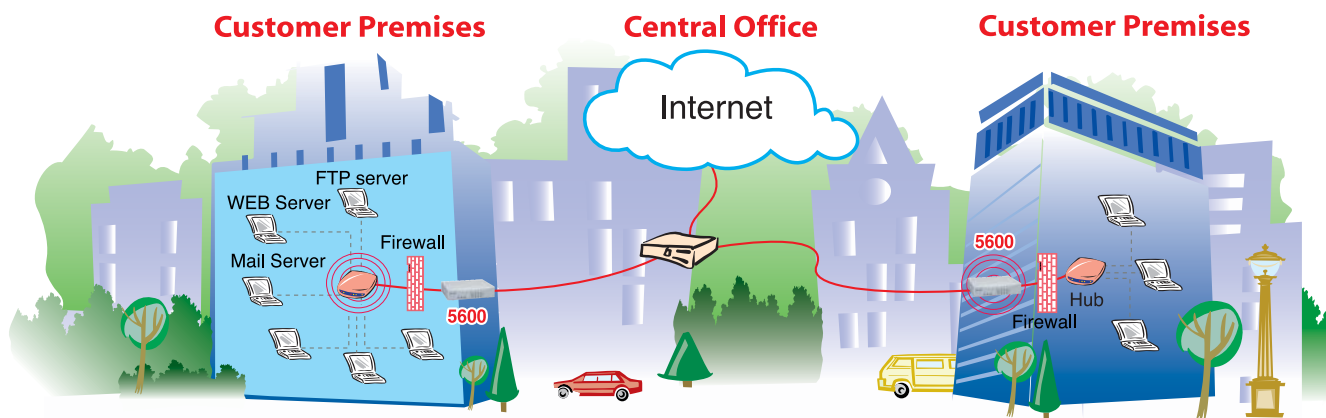
PROSCEND 5600 series implements the management features based on IEEE 802.3ah standard and it enables users to significantly reduce operation expense by eliminating unnecessary transformation between Ethernet and legacy ATM network. As based on user-friendly Ethernet, it saves time and costs because of simple engineering task without additional trainings costs. Packet based technology which architecture utilizes 100% packet transmission technology for optimum throughput and reliability. With a compact form-factor design and optimization for the use over existing copper network, PROSCEND 5600 series reduces the initial investment cost and deployment time in delivering higher speed Ethernet service. It provides minimized risk bearing and quick return on investment to service providers and enterprises

PROSCEND 5600 LAN port is interoperable with any standard Fast Ethernet interfaces from switches, routers, and NG-SONET/SDH Equipment. PROSCEND 5600 management interfaces include comprehensive command-line interface (CLI), user-friendly GUI-based Web Browser Interface, SNMP and Telnet.

PROSCEND 5600 series can bond up to 4 pairs and deliver up to 22.8 Mbps Ethernet services to all users within their service area by utilizing existing copper infrastructure and EFM 802.3ah PAF bonding technology. Service Providers and enterprises are able to offer symmetrical high speed connectivity for transparent Ethernet service on DSLAM backhaul, Wireless backhaul, and more.

PROSCEND 5600 Series provides future-proof features meeting Ethernet Quality of Service (QoS) and Class of Service (CoS) requirements by utilizing 802.1q VLAN capabilities, four levels of priorities, traffic flow control and rate control. This traffic management and QoS features enable service providers to offer highly profitable and value-added services to a vast majority of business and institutional sites.





## Features

- \* Extending Ethernet Services to sites with existing copper infrastructure
- \* Increased Flexibility in Deployment
- \* Lower Investment and Quick Return on Investment
- \* EFM Bonding (PAF, PME Aggregation Function) up to 22.8Mbps (4 pairs)
- \* Support EFM OAM complying IEEE 802.3ah
- \* Flexible configuration as CPE or CO
- \* Low Delay, Jitter and Packet Loss for delay sensitive application
- \* Comprehensive and easy OAM & P functions in provisioning and managing
- \* QoS feature for guaranteed Ethernet service
- \* Future-proof Ethernet traffic management and QoS features

## 5600 Series 2BASE-TL EFM Network Extender



## Specification

### Network Interface

#### LAN

- 4 X 10/100BASE-T Ports (RJ45)
- Auto MDI/MDI-X

#### WAN

- ITU-T G.991.2.(2004)
- 2BASE-TL, 64/65o encoding
- EFM bonding (IEEE 802.3ah PAF)
- RJ45 Connector
- Max 22.8Mbps (5.7Mbps/Port)

### LAN Protocols

- 802.1d Transparent Bridging
- Up to 2K MAC Address

### Indicator

- LAN : Link/Act, 10/100 per port
- WAN: Link/Activity per loop
- System: Power, Alarm, Diagnostic

### Management Interface

#### In- Band

- EFM (IEEE 802.3ah) OAM
- Web Browser(HTTP), SNMP, Telnet

#### Out-Band

- Console (RS-232, RJ-45): CLI (menu driven)
- Management Port (Ethernet, RJ-45): Web Browser(HTTP), SNMP, Telnet

### VLAN Support

- Port-bases & Tag-based (802.1Q)
- Up to 16 VLANs
- Priority Re-mapping
- VLAN Trunk mode

### QoS Support \*

- Ingress Rate control
- Egress Traffic Shaping
- Classification based on Port / 802.1p / DSCP
- 4 Priority Queues
- Strict Priority
- Simple WFQ (Weighted Fair Queue)

### Environment

- Operating Temperature: 0°C ~ +50°C
- Extended Operating Temperature: -20°C ~ +45°C
- Storage Temperature: -40°C ~ +85°C
- Relative Humidity: 98%, non-condensing

### Regulatory

- ISO 9001 Quality Management
- CE Approval

### Mechanical & Power Requirement

- Dimension (mm): 195 x 48 x 168
- 90~240VAC with 50~60Hz
- DC 9V 1.0A (External adaptor)\*

### Ordering Information

- 5610E: 1-pair 2BASE-TL EFM Network Extender
- 5620E: 2-pair 2BASE-TL EFM Network Extender
- 5640E: 4-pair 2BASE-TL EFM Network Extender

For the spec. marked "", please contact PROSCEND

\*Feature will be implemented or optional.  
\*Specifications are subject to change without notice.

**PROSCEND**<sup>®</sup>  
Proscend Communications Inc.